



THE UNIVERSITY
of EDINBURGH

MSc Environmental Protection and Management

Professor Alistair Hamilton | 20 November 2025

EDINBURGH
xtraordinary futures await

Who are we?

- Professor Alistair Hamilton

- Programme Director - background in applied ecology, but now also work in spatial mapping and modelling, as well as interdisciplinary areas



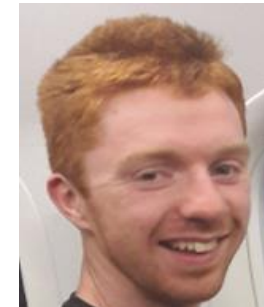
- Dr. Hannah Grist

- Deputy Programme Director – coastal ecology background, increasingly engaged in interdisciplinary studies, community and stakeholder engagement



- Dr. Andrew Innes

- Senior lecturer – environmental chemist, specialism in soil and water pollution, modelling and research design and analysis



Institutional Context



THE UNIVERSITY *of* EDINBURGH
School of GeoSciences



THE UNIVERSITY
of EDINBURGH



EDINBURGH
xtraordinary futures await

Who/what is SRUC?

- Scotland's Rural College
- Specialist HEI with a focus on land-based industries and issues
- Research and education, but also a large consultancy business. A main research provider to the Scottish Government.
- University partner in MSc delivery. You are a normal UoE/GeoSciences MSc student!



THE UNIVERSITY
of EDINBURGH



EDINBURGH
extraordinary futures await

Why study this MSc?

- Gain an in-depth understanding of natural resource management based on a scientific understanding of the issues, but also allowing you to explore how implementing solutions requires working across disciplines.
- It will equip you with advanced skills and knowledge about:
 - the processes that give rise to environmental degradation and pollution problems
 - the strategies to affect sustainable change



THE UNIVERSITY
of EDINBURGH



EDINBURGH
xtraordinary futures await

Why Edinburgh?

- Well established programme – constantly evolving over the last 25 years
- Access to expertise and facilities across the University and SRUC
- Diverse and interdisciplinary teaching team
- Flexibility to pursue your own area of interest through coursework and dissertation
- Extensive alumni network, engaging with them from day 1
- Every year comes from a diversity of backgrounds, countries, experiences



THE UNIVERSITY
of EDINBURGH



EDINBURGH
xtraordinary futures await

Programme structure

Find a full list of compulsory and option courses on the [Degree Programme Tables](#)

Compulsory Courses	Semester	Credits
Land Use/Environmental Interactions	Semester 1	20
Professional and Research Skills in Practice	Full Year	20
Interdisciplinary Approaches to the Environment	Semester 2	20
Environmental Survey and Monitoring	Semester 2	20
Dissertation	April - August	60
2 option courses	1 per semester	40



THE UNIVERSITY
of EDINBURGH



EDINBURGH
xtraordinary futures await

Part-time structure

- Two and three-year part-time options are available.
- We recommend living within a commutable distance from Edinburgh in order to undertake part-time study, and we encourage you to contact us to discuss part-time study in more detail.

2-year programme	
Year 1	4 compulsory courses 1 option course
Year 2	Dissertation 1 option course
3-year programme	
Year 1	2 compulsory courses 1 option course
Year 2	2 compulsory courses 1 option course
Year 3	Dissertation



THE UNIVERSITY
of EDINBURGH



EDINBURGH
xtraordinary futures await

Teaching and assessment

- Courses can be delivered through a mix of lectures, guest speakers, workshop-style activities, problem-based learning
- Fieldwork
- Assessments include essays, reports, policy briefs, presentations (individual and group), webpages, and creative pieces (multimedia)



THE UNIVERSITY
of EDINBURGH



EDINBURGH
extraordinary futures await

Dissertation

- An opportunity to explore, in-depth, a topic of your choice in relation to the programme, with the support of an academic supervisor
- Can be desk-based research or fieldwork
- Typically 10,000 – 15,000 words
- Your bespoke project can be developed from your own idea and/or in collaboration with external organisations, or with current ongoing research conducted at SRUC and the University of Edinburgh
- You can use the dissertation to demonstrate your work to potential employers



THE UNIVERSITY
of EDINBURGH



EDINBURGH
xtraordinary futures await

Possible dissertation topics

- COVID impacts on air pollution in China and the UK
- Development of automated mapping from UAV (drone) data
- Gender issues in waste policy
- Biochar impacts on soil nutrient cycling
- Heavy metal pollution and phytoremediation
- River and flood risk modelling
- Life cycle analysis of Italian wine production
- Wildlife/human conflicts in Canadian parks
- GHG emissions from agriculture: a policy analysis
- Mapping the potential for urban nature-based solutions
- Stakeholder evaluation for achieving NetZero
- Biodiversity and farm management options



THE UNIVERSITY
of EDINBURGH



EDINBURGH
xtraordinary futures await

What a typical week looks like...

Semester 1, Week 4	
Classes	Timetable
Land Use/Environmental Interactions – Lecture/practical sessions	Tue, 14:10-17:00
Professional and Research Skills in Practice – Lecture	Thu, 14:10-15:00
Professional and Research Skills in Practice – Practical	Thu, 15:10-17:00
Option course: Coastal Environments and Communities – Lecture	Wed, 09:00-13:00
Total class hours	Roughly 10hrs

- Please note that the option course listed is just an example – hours will vary depending on the option courses you choose.



THE UNIVERSITY
of EDINBURGH



EDINBURGH
xtraordinary futures await

Other activities

- You will also need to take into account your own independent study hours (typically 2-3 hrs per contact hr), find where you work best!
- You are encouraged to engage with your lecturers and guest speakers, develop your professional network
- Other activities take place each semester:
 - May also have a dissertation workshop, or cohort/geosciences event to attend.
 - Workshops – often take place on Wed afternoon
 - Evening events – potluck, careers/alumni get together, ceilidh
 - Weekend activities – visits, hillwalking



Field trips

- There is a residential field trip as part of this programme, in recent years to Morocco
- Students learn a range of field and data analysis techniques covering topics such as:
 - ☐ water quality assessment
 - ☐ biodiversity monitoring
 - ☐ river survey and flood modelling
 - ☐ carbon footprinting local agriculture
 - ☐ social science and tourism attitudes
 - ☐ air quality monitoring



Field trips

- We also typically offer local trips as part of your compulsory courses to explore the surrounding environments
- This includes day trips to get to know Edinburgh during your first weeks with us, and a residential dissertation retreat in the Highlands
- Please note that field course locations may vary year to year, but will always align with course learning outcomes





THE UNIVERSITY
of EDINBURGH



EDINBURGH
extraordinary futures await



THE UNIVERSITY
of EDINBURGH



EDINBURGH
extraordinary futures await

Career opportunities

- We produce graduates with a holistic approach to environmental issues, flexibility in assessing and implementing possible solutions, and possessing key academic and soft skills for the workplace or further studies



THE UNIVERSITY
of EDINBURGH



EDINBURGH
extraordinary futures await

Career opportunities

- Examples of graduate roles include:

- environmental regulators
- international and governmental agencies
- NGOs
- private environmental consultancies
- PhD studies and academia
- and many more.

- Examples of where our graduates have gained employment:

- SEPA
- Talisman Energy
- AECOM
- Water Witness
- The Archipelagos Institute of Marine Conservation



THE UNIVERSITY
of EDINBURGH

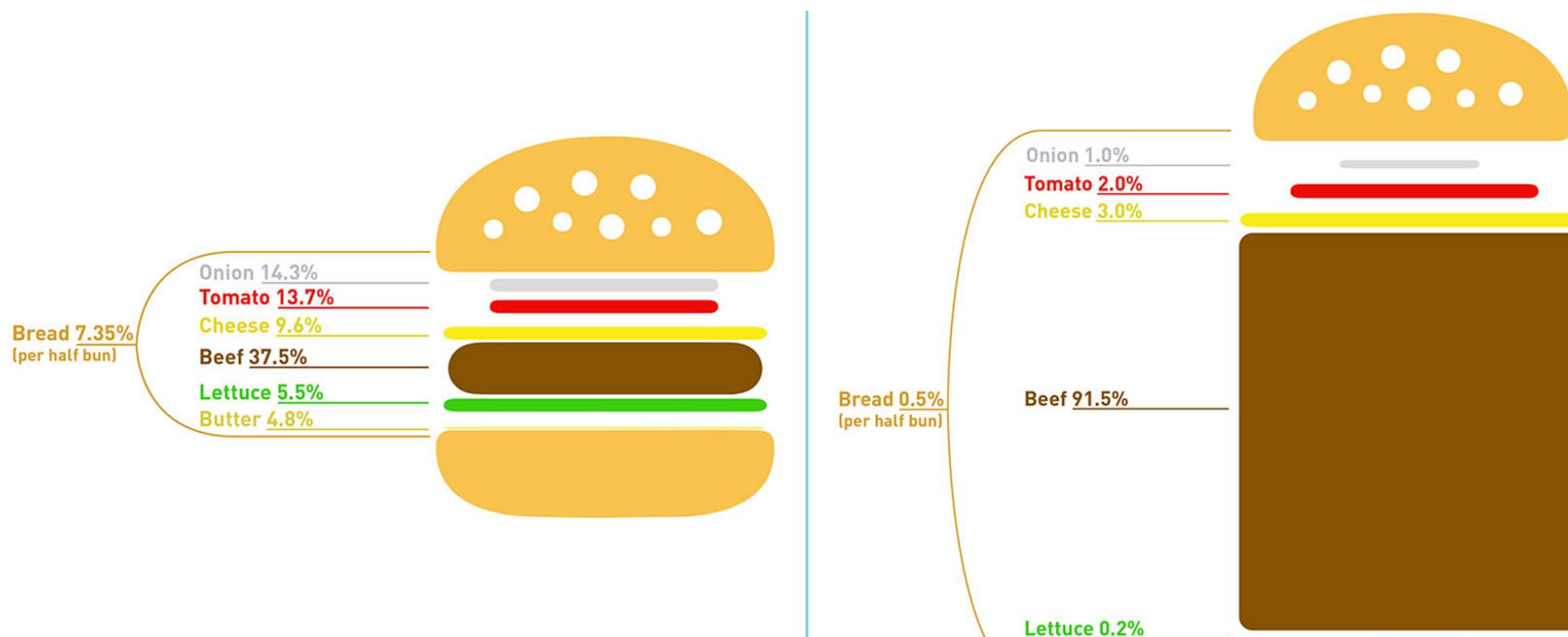


EDINBURGH
extraordinary futures await

Links with consulting

Find out more by visiting the SRUC website -

<https://www.sruc.ac.uk/business-services/sac-consulting/>



Our alumni – Laura Young

- Graduated 2019
- Worked for international development NGO Tearfund as a **Scotland COP26 Advocacy and Campaigns Coordinator**.
- Runs the environmental platform **Less Waste Laura** across social media channels
- "For a year, I was immersed in such a wide range of environmental issues, looking at everything from the soil biology to political strategies and everything in between. I chose to study at Edinburgh because of its reputation and academic quality."



THE UNIVERSITY
of EDINBURGH



EDINBURGH
xtraordinary futures await

When to apply?

- Due to high demand for this programme, we operate on a series of early application deadlines.
- We strongly recommend you apply as early as possible.
- You should avoid applying to more than one degree. Applicants who can demonstrate their understanding and commitment to a specific programme are preferred.
- If you plan to apply to more than one programme, you should discuss your choices with us before you submit your application.
- Where possible, we may make an alternative programme offer if you have been unsuccessful in your chosen programme.



THE UNIVERSITY
of EDINBURGH



EDINBURGH
xtraordinary futures await

Student cohort

- As a result of our interdisciplinary approach to environmental management, our programme attracts students from a variety of backgrounds, allowing you to benefit from a diverse set of insights and perspectives
- 430 applicants for 2025 entry
- 28 new students on course in 2025/26



THE UNIVERSITY
of EDINBURGH



EDINBURGH
extraordinary futures await

Scholarships and funding

- Featured funding
 - [Chevening Scholarships](#)
- School of GeoSciences scholarships
 - [See potential funding for GeoSciences students](#)
- Scotland's Rural College (SRUC) alumni discount
 - [Visit the SRUC website](#)
- You are encouraged to research the range of potential scholarships and other funding outside the University for which you may be eligible
 - [Search for funding](#)



THE UNIVERSITY
of EDINBURGH



EDINBURGH
xtraordinary futures await

Next steps...

<https://edin.ac/student-chat-pg>



THE UNIVERSITY
of EDINBURGH



EDINBURGH
xtraordinary futures await

Contact details for follow-up questions

- We apologise if we did not get through all of your questions in the time allotted for this session. If you have further questions that have not been answered, please email: futurestudents@ed.ac.uk
- Or, Professor Alistair Hamilton: Alistair.Hamilton@sruc.ac.uk



THE UNIVERSITY
of EDINBURGH



EDINBURGH
extraordinary futures await



THE UNIVERSITY
of EDINBURGH

Thank you

Professor Alistair Hamilton

Alistair.Hamilton@sruc.ac.uk