



THE UNIVERSITY
of EDINBURGH

Masters degrees in Engineering

This session will begin at 12:00 (GMT)

Dr Philip Hands

Director of Student Recruitment, School of Engineering

EDINBURGH
xtraordinary futures await

Today's Session

- **General introduction (35 minutes):**

Presentation on structure and format of Taught Masters Programmes, facilities and support (*Philip Hands, Director of Student Recruitment*)

- **Edinburgh Innovations (10 minutes)**

Brief presentation about support for student innovation and entrepreneurship (*Christina Starko, Edinburgh Innovations*)

- **Final Q&A (10-15 minutes)**

Q&A (*All staff*)



THE UNIVERSITY
of EDINBURGH

EDINBURGH
extraordinary futures await

The King's Buildings Campus

- Located in the south of the city:
About 30 minutes' walk from the Central Area.
Less than 15 minutes by bike from the city centre.
- Services include academic schools, library, study facilities, Careers Service, cafes, etc.
- Recently opened Nucleus Building (teaching & social space)
- New Engineering building (opening Spring 2026)
- Edinburgh University Students Association (EUSA) runs various facilities on campus

Nucleus



New Engineering building



THE UNIVERSITY
of EDINBURGH

EDINBURGH
extraordinary futures await

The School of Engineering

- Engineering is largest of 7 schools in College of Science & Engineering
- 1900 undergraduates, 600 postgraduates (200 MSc, 400 PhD)
- 170 academic staff
- 130 post-doctoral researchers
- 160 professional & technical staff
- Academic workload is split roughly equally between teaching and research
- Organised into 4 teaching disciplines & 7 research institutes

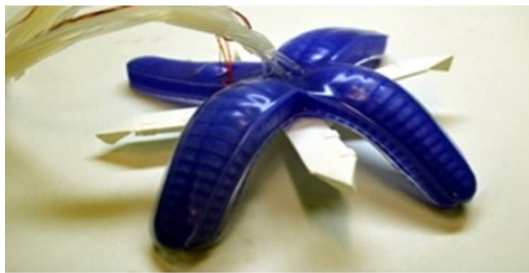
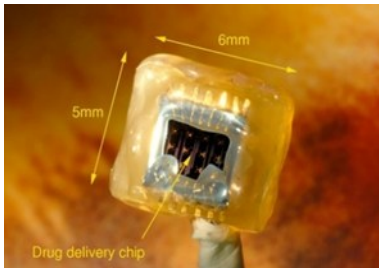
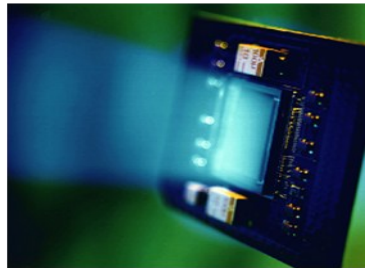
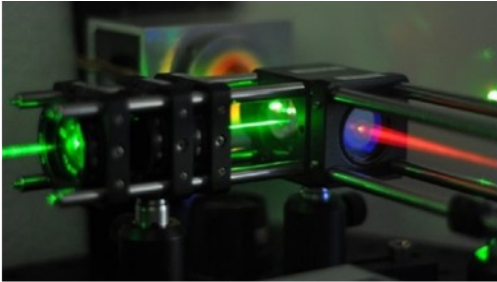


THE UNIVERSITY
of EDINBURGH

EDINBURGH
extraordinary futures await

Research Institutes

MSc students are embedded within a research institute during final research project, and supervised by a leading academic



Bioengineering (IBioE)

Digital Communications (IDCoM)

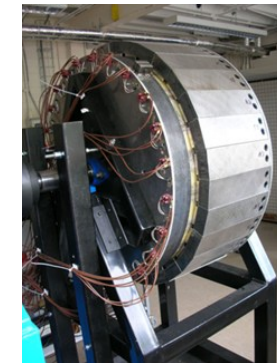
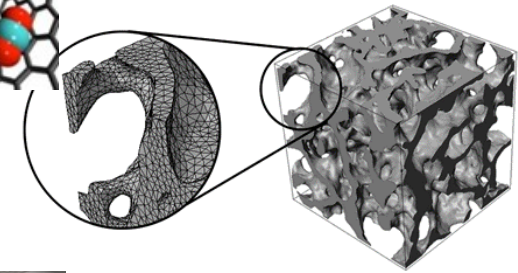
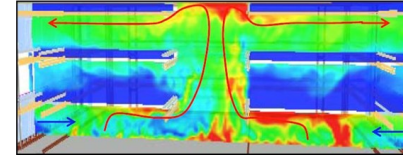
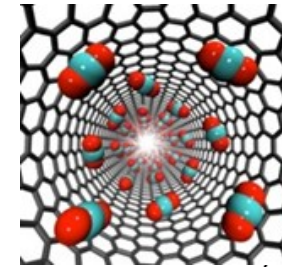
Energy Systems (IES)

Integrated Micro & Nano Systems (IMNS)

Infrastructure & Environment (IIE)

Materials & Processes (IMP)

Multiscale Thermofluids (IMT)

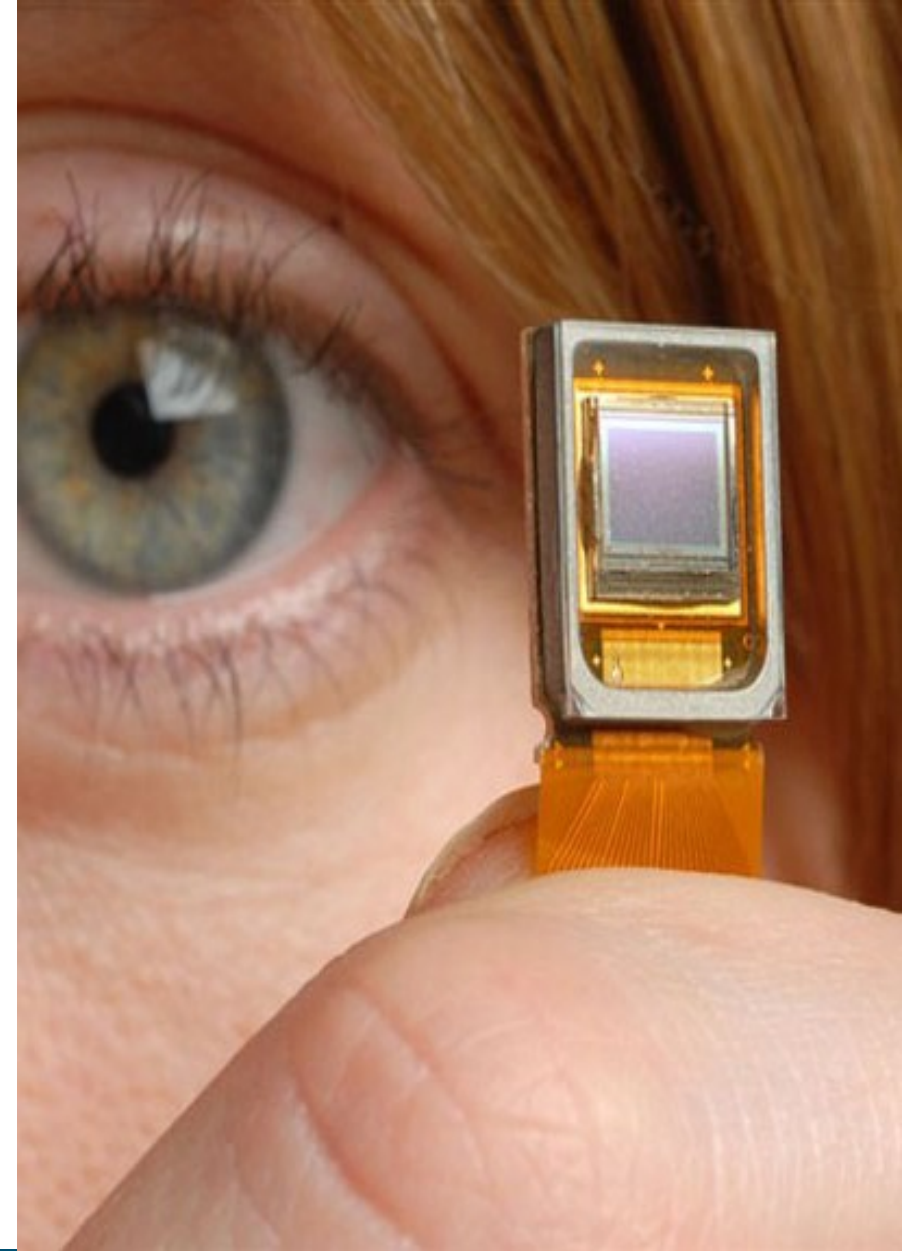


THE UNIVERSITY
of EDINBURGH

EDINBURGH
xtraordinary futures await

Why Edinburgh?

- **Joint #1 in world** for Industry, Innovation & Infrastructure (Times Higher Education Impact Rankings 2025)
- Student-led innovation opportunities & support:
 - Student Enterprise Hub
 - Edinburgh Entrepreneurs
 - Higgs Centre for Innovation (incubation)



THE UNIVERSITY
of EDINBURGH

EDINBURGH
xtraordinary futures await

Why Edinburgh?

- **#2 in UK, #4 in world**
(QS World University Rankings: Sustainability 2026)
- Recognises our leadership in creating a more sustainable world through research, teaching, partnerships and operations
- Our degree programmes align with many of the UN's Sustainable Development Goals



THE UNIVERSITY
of EDINBURGH

EDINBURGH
extraordinary futures await

Why Edinburgh?

- Ranked **1st in UK** for Electrical & Electronic Engineering, **2nd in UK** for Mechanical Engineering, **3rd in UK** for Chemical Engineering, **4th in UK** for Civil & Environmental Engineering (Guardian UK University Guide 2026).
- Consistently ranked in the **UK's top universities for Engineering** (THE Rankings by subject, QS World University Rankings by Subject).
- Ranked **1st in Scotland** and **3rd in the UK** for quality and breadth of research (REF 2021, Edinburgh Research Partnership in Engineering joint submission).
- You will learn from leading academics who are researching solutions to the world's grand challenges. You will have opportunities to gain research experience through our specialist MSc research projects.
- The University has strong connections with local industry, particularly in fields related to engineering.
- Edinburgh is ranked 15th globally, 8th in Europe, and 2nd in UK in the QS Best Student Cities 2026.
- Scholarship opportunities: <https://registryservices.ed.ac.uk/student-funding/search-scholarships>
- Great employment and further study opportunities.



Our taught MSc programmes

- [MSc Advanced Chemical Engineering](#)
- [MSc Advanced Power Engineering \(2 years\)](#)
- [MSc Digital Design & Manufacture](#)
- [MSc Electrical Power Engineering](#)
- [MSc Electronics](#)
- [MSc Fire Engineering Science](#)
- [MSc Signal Processing & Communication](#)
- [MSc Sustainable Energy Systems](#)

Jointly-awarded programmes:

- [MSc Sensing & Imaging Systems](#) (University of Glasgow)
- [International Masters of Science in Fire Safety Engineering](#) (Ghent University)
- [MSc Biomedical Engineering](#) (Heriot Watt University)

Degree Finder information: <https://edin.ac/4dPXTcP>

Degree Programme Timetables (DPTs): http://www.drps.ed.ac.uk/25-26/dpt/drps_eng.htm



Typical (1 year) MSc programme structure

- Full year programme: September – August
- 180 credits required in total.
- Semester 1: 60 credits
Semester 2: 60 credits
Summer research project: 60 credits
- Most programmes have a combination of both compulsory courses and some optional courses.
- Students are based at King's Buildings (except for joint programmes).
- Selection of summer research projects to choose from (Semester 1).
Allocation of project/supervisor based on preferences (Semester 2).
(Student-led projects can also be accommodated by arrangement)
- Degree accreditation towards chartered status.
- Graduation at following Winter ceremony (Nov/Dec).

The Academic Year (2026 – 2027)

- | | |
|-----------------------------------|----------------------------|
| • Welcome Week | 14 -18 September 2026 |
| • SEMESTER 1 | 21 September – 21 December |
| • Revision week | 30 Nov - 4 December (TBC) |
| • Exams | 7 - 18 December (TBC) |
| • SEMESTER 2 | 11 January – 5 April 2027 |
| • Flexible Learning Week | 15 – 19 February |
| • Revision | 19 – 24 April (TBC) |
| • Exams | 26 April- 20 May |
| • Summer Graduation | July 2027 |
| • Dissertation research & writing | May-August |
| • Submission of Dissertation | Mid-late August 2026 (tbc) |
| • Winter Graduation | Nov 2027 (tbc) |

Graduation

McEwan Hall



THE UNIVERSITY
of EDINBURGH

EDINBURGH
extraordinary futures await

How to apply

- Applications for our MSc programmes are made online through our [Degree Finder](#) pages.
- Guidance is provided on how to complete each section, and what additional documents you need to submit.
- Carefully read the specific entry requirements and illustrate your eligibility within your application.
 - E.g. if programming skills are required, describe this on your transcript.
 - E.g. for MSc Electronics, mention if you have FPGA/Verilog experience.
- Deadlines depend on the programme.
Check the “Application deadline” on Degree Finder.
- Offers are made throughout the cycle.
- Offers may be conditional or unconditional.
- Deposits are requested to confirm your acceptance.



THE UNIVERSITY
of EDINBURGH

EDINBURGH
extraordinary futures await

When will I receive a decision on my offer?

Selection deadlines

Round	Application deadline	Decisions made (or applications rolled to next deadline)
1	15 December	1 March
2	31 March	31 May
3	31 May	31 July

Strong candidates may receive an earlier decision

Rolling deadlines

Within 8-10 weeks of a completed application.

Check portal for any communications with Admissions and respond promptly.

Applicants:

Read the specific entry requirements on Degree Finder so you illustrate your eligibility.

E.g. if you need programming, mention this if not on your transcript

E.g. for MSc Electronics, mention that you have FPGA/verilog.

Our facilities

Teaching spaces

Modern lecture theatres, student study spaces, food/drink services (Nucleus Building)



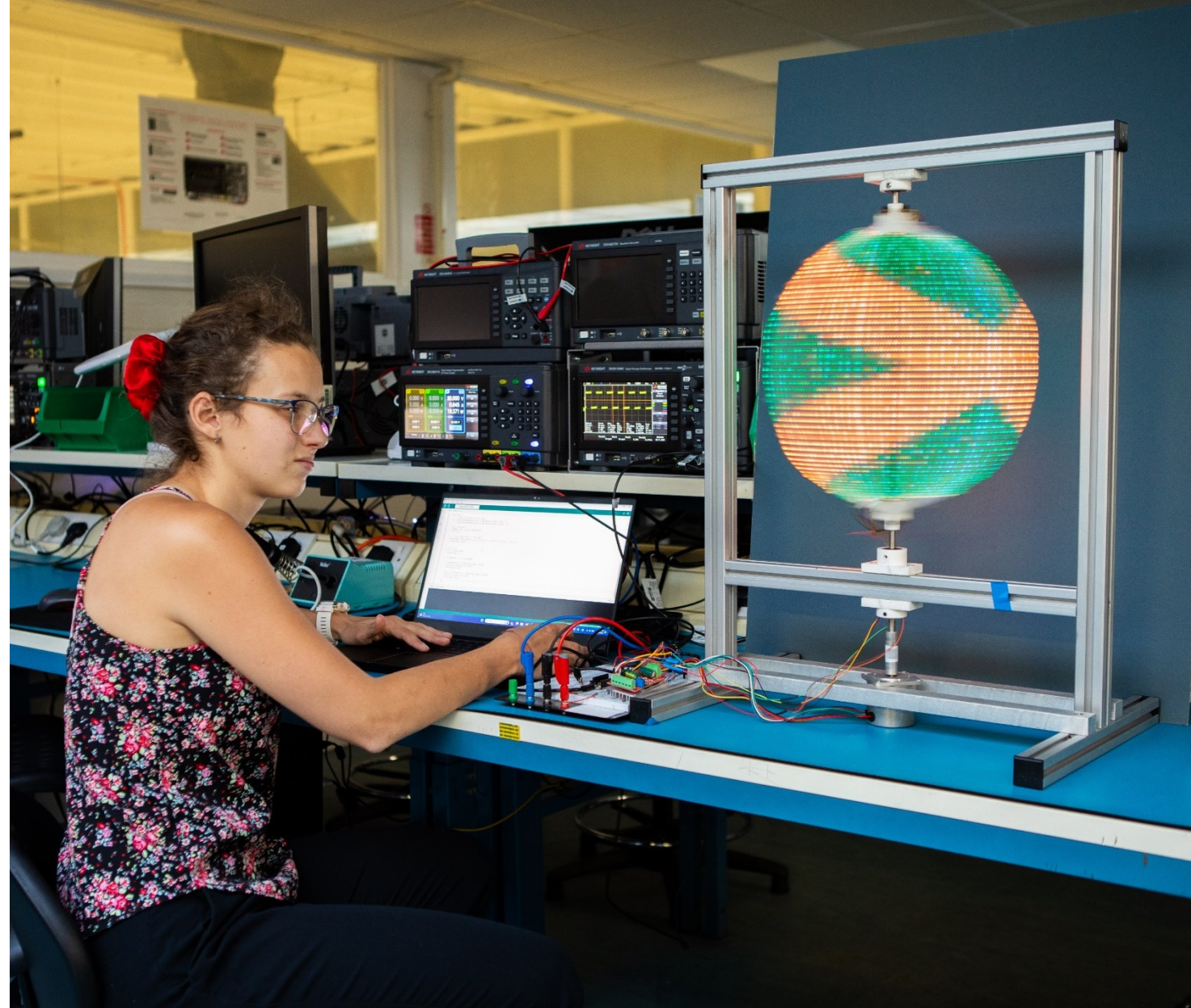
THE UNIVERSITY
of EDINBURGH

EDINBURGH
extraordinary futures await

Our facilities

Teaching laboratories

Modern & well-equipped labs, with industry-standard tools and equipment.
(Kivlin Suite)



THE UNIVERSITY
of EDINBURGH

EDINBURGH
xtraordinary futures await

Our facilities

Remote laboratories

Pioneering development of new digital learning technologies, providing complementary support to physical laboratories.



THE UNIVERSITY
of EDINBURGH

EDINBURGH
extraordinary futures await

Our facilities

Makerspace

Free-to-access facility for design and rapid prototyping.



THE UNIVERSITY *of* EDINBURGH
School of Engineering

Engineering Makerspace

<https://www.youtube.com/watch?v=b0dqJMU4bI>



THE UNIVERSITY
of EDINBURGH

EDINBURGH
extraordinary futures await

Our facilities

Research laboratories

World-leading research facilities.
(e.g. Flowave)



THE UNIVERSITY
of EDINBURGH

EDINBURGH
extraordinary futures await

Our facilities

Research laboratories

World-leading research facilities.
(e.g. Fire labs)



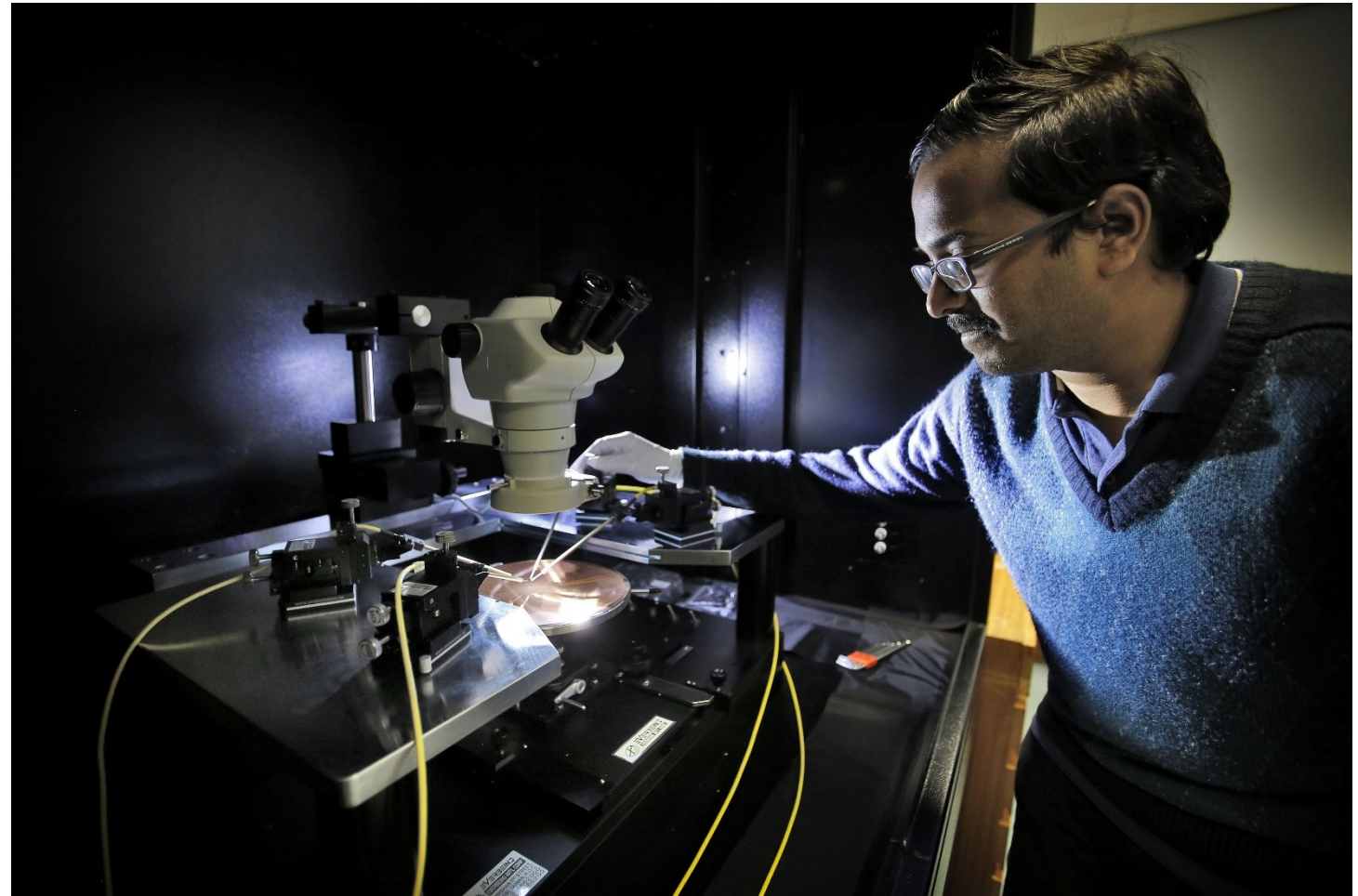
THE UNIVERSITY
of EDINBURGH

EDINBURGH
extraordinary futures await

Our facilities

Research laboratories

World-leading research facilities.
(e.g. Scottish Microelectronics Centre)



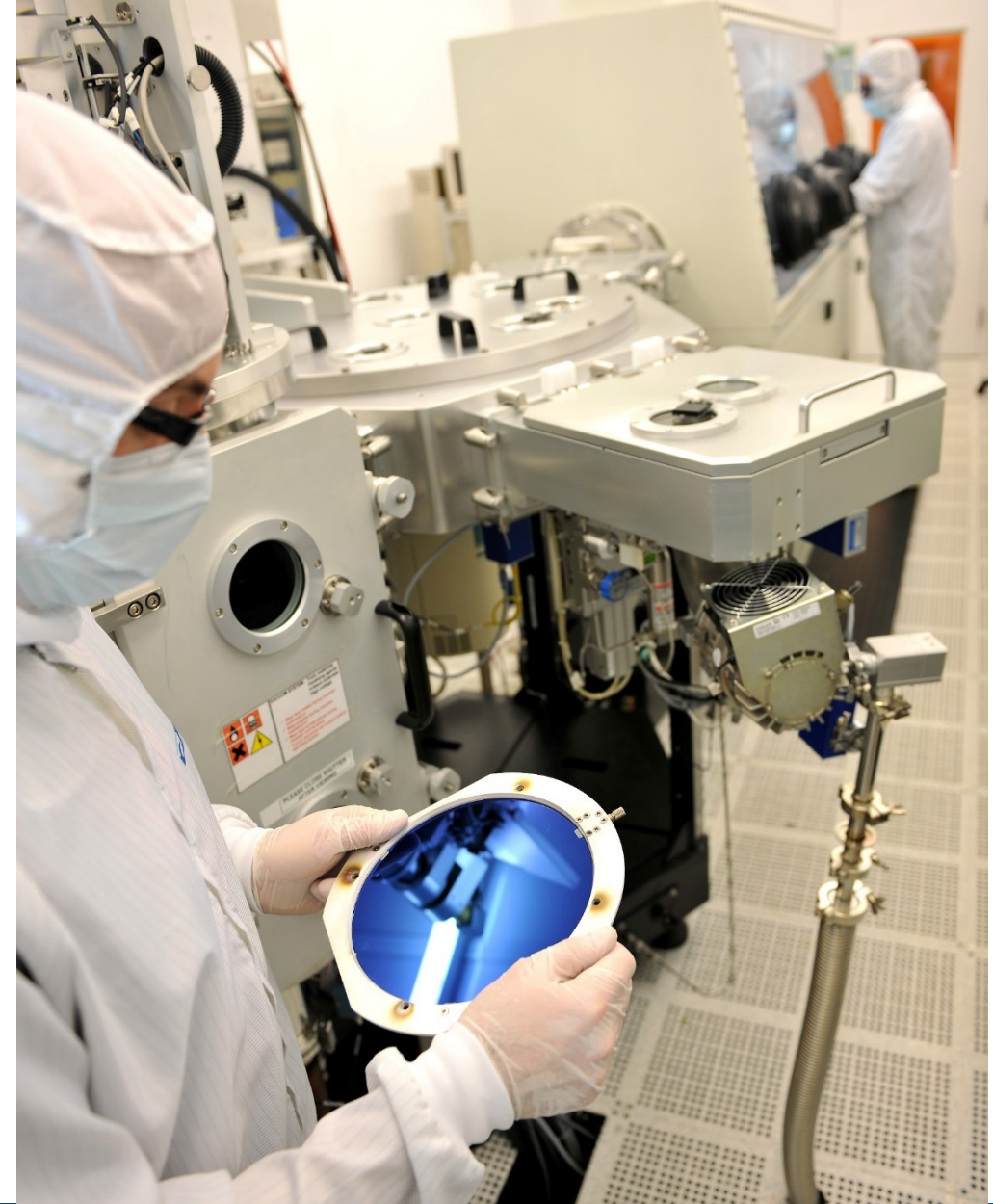
THE UNIVERSITY
of EDINBURGH

EDINBURGH
extraordinary futures await

Our facilities

Research laboratories

World-leading research facilities.
(e.g. Scottish Microelectronics Centre)



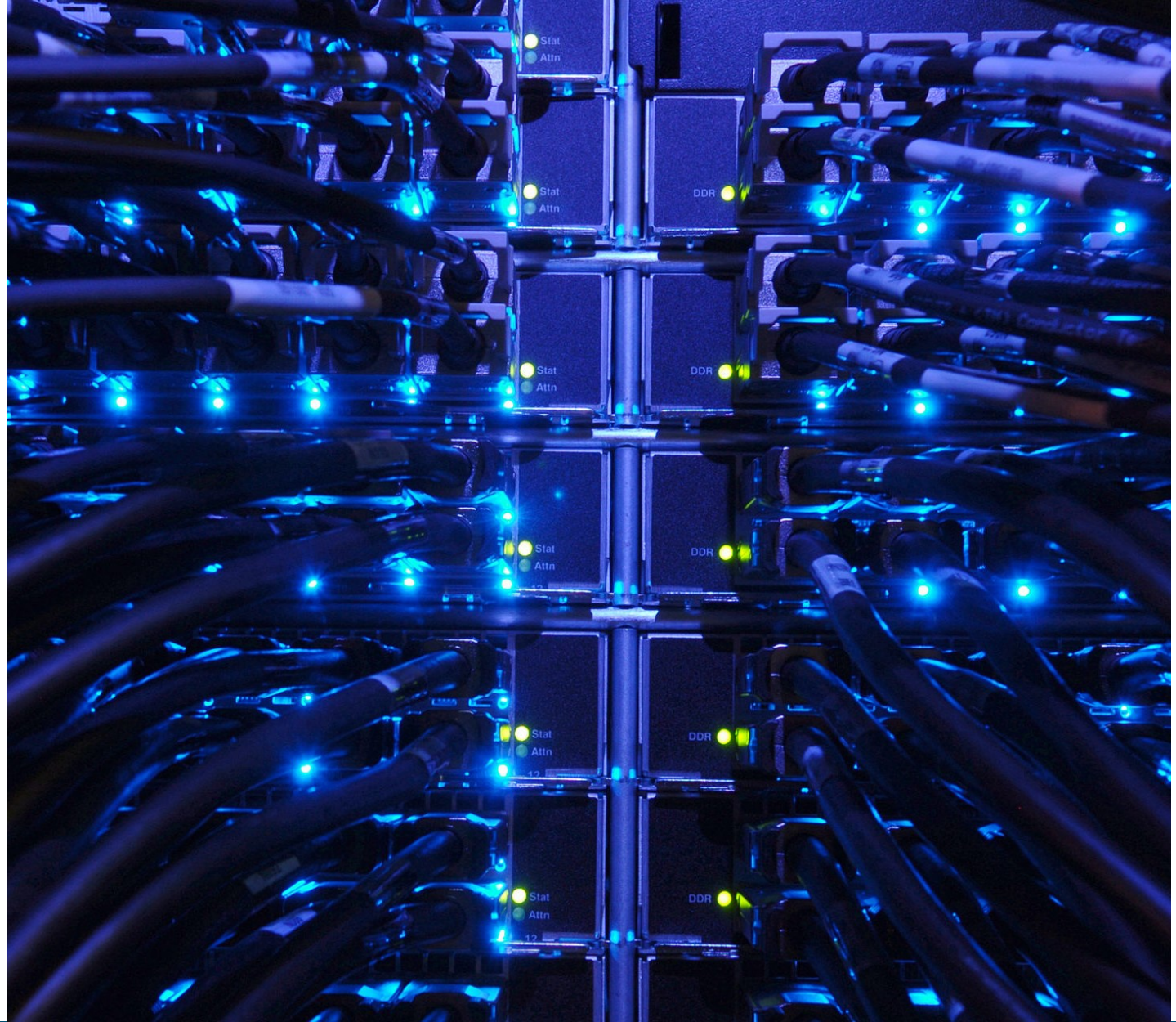
THE UNIVERSITY
of EDINBURGH

EDINBURGH
xtraordinary futures await

Our facilities

High performance computing

Access to high performance computer clusters for MSc projects in simulation, machine learning, data analysis, etc.



THE UNIVERSITY
of EDINBURGH

EDINBURGH
extraordinary futures await

Student Support System

Before arrival, all students are allocated:

- Student Adviser
- Academic Cohort Lead

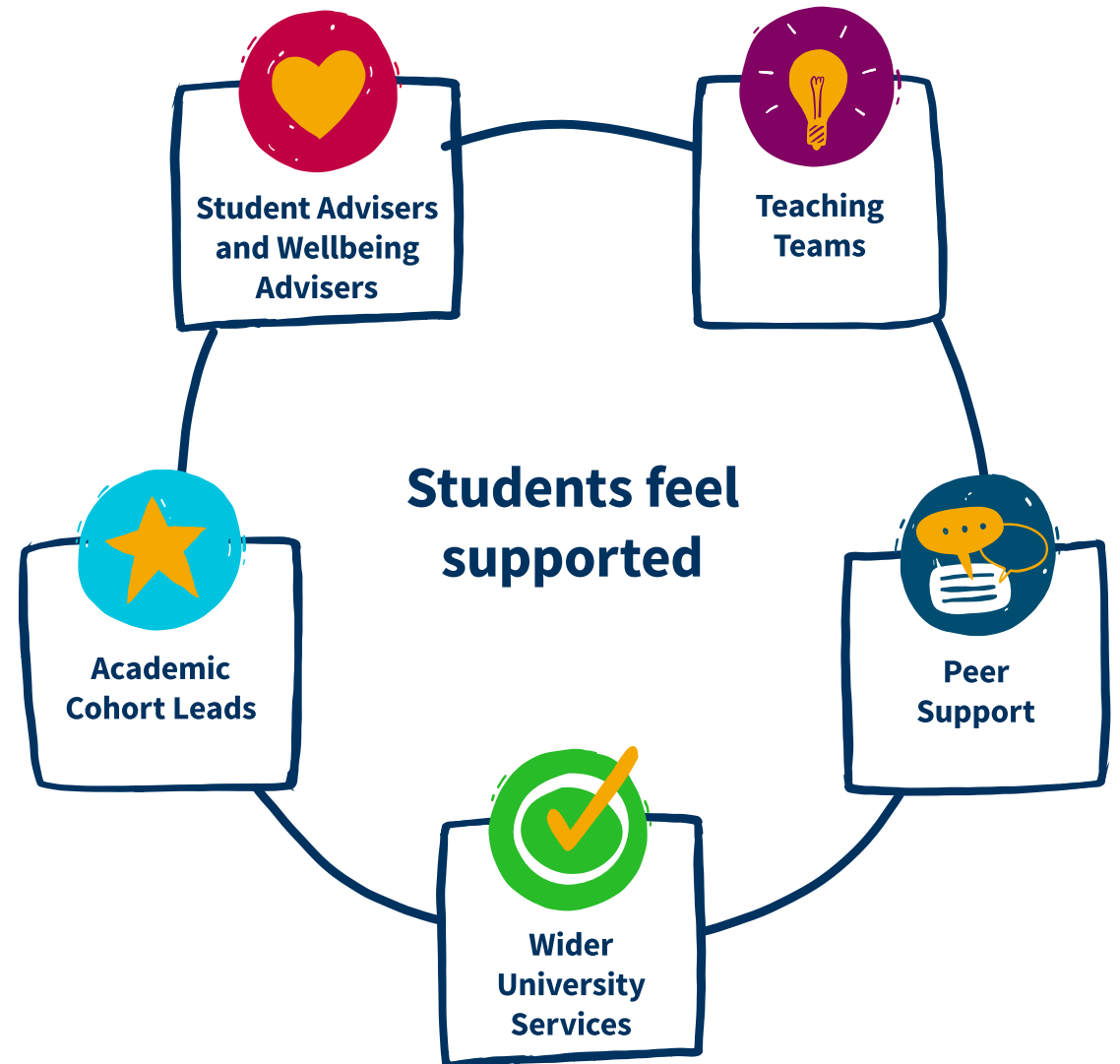
Additional support available from:

- School Student Support Team
- Peer support networks
- The Advice Place (EUSA)
- Wider University services (Counselling Service, Careers Advisory Service, Student Immigration Service, etc.)

Academic support:

- Teaching teams (Lecturers, Tutors, Demonstrators)
- Engineering Teaching Office (ETO)

<https://eng.ed.ac.uk/studying/student-support>



Our community

- Students immersed in research group culture during their extended project, embedded within one of our research groups, alongside PhD (doctoral) students and postdoctoral researchers.
 - Experience of working in wider team, working at forefront of field, writing research publications.
- Opportunities to attend our School Annual Research Conference, research seminars, public lectures, and other events organised by Engineering Graduate Society.
- Wide range of extra-curricular learning and personal development courses available.
- Activities organised by Cohort Leads.
- Very wide range of University student-led clubs and societies.
- Friendly and approachable staff.
- International and student-friendly city.



Postgraduate Tuition Fees & funding

Tuition fees for academic year 2026/2027 can be found on our website:

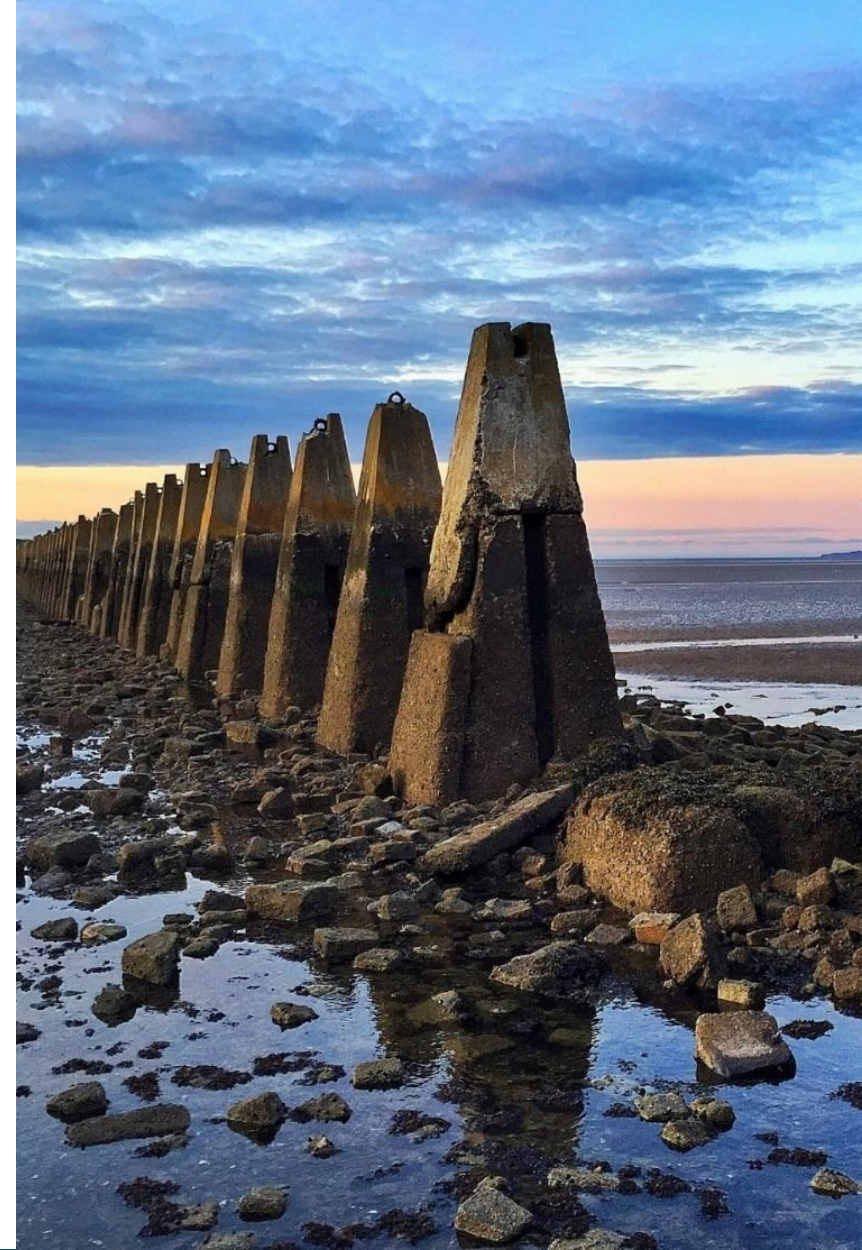
<https://registryservices.ed.ac.uk/tuition-fees/find/postgraduate-taught/2026-2027/taught-masters>

Discounts available for former University of Edinburgh students//visitors.

Scholarships

- The University has a good search tool to find which scholarships you could be eligible to apply for: www.ed.ac.uk/student-funding/search-scholarships
- Some are specific to different nationalities
- Each scholarship has its application deadline

A cost of living estimate, including a breakdown of these costs, can be found on the university website: www.ed.ac.uk/studying/international/finance/cost-of-living



THE UNIVERSITY
of EDINBURGH

EDINBURGH
extraordinary futures await

Accommodation

You are guaranteed an offer of University accommodation if you are a new, single postgraduate taught (PGT) student, from outside the UK.

The guarantee applies as long as:

- your online accommodation application is received by 31 July; **and**
- you have accepted, by 31 July an unconditional firm (UF) offer to study at the University; **and**
- you will be studying in Edinburgh for the whole of the academic year starting in September.

<https://www.accom.ed.ac.uk>



THE UNIVERSITY
of EDINBURGH

EDINBURGH
xtraordinary futures await

STARTUP AND STAND OUT

Introduction to Edinburgh Innovations for students

Christina Starko

Enterprise Executive Lead



EDINBURGH
INNOVATIONS



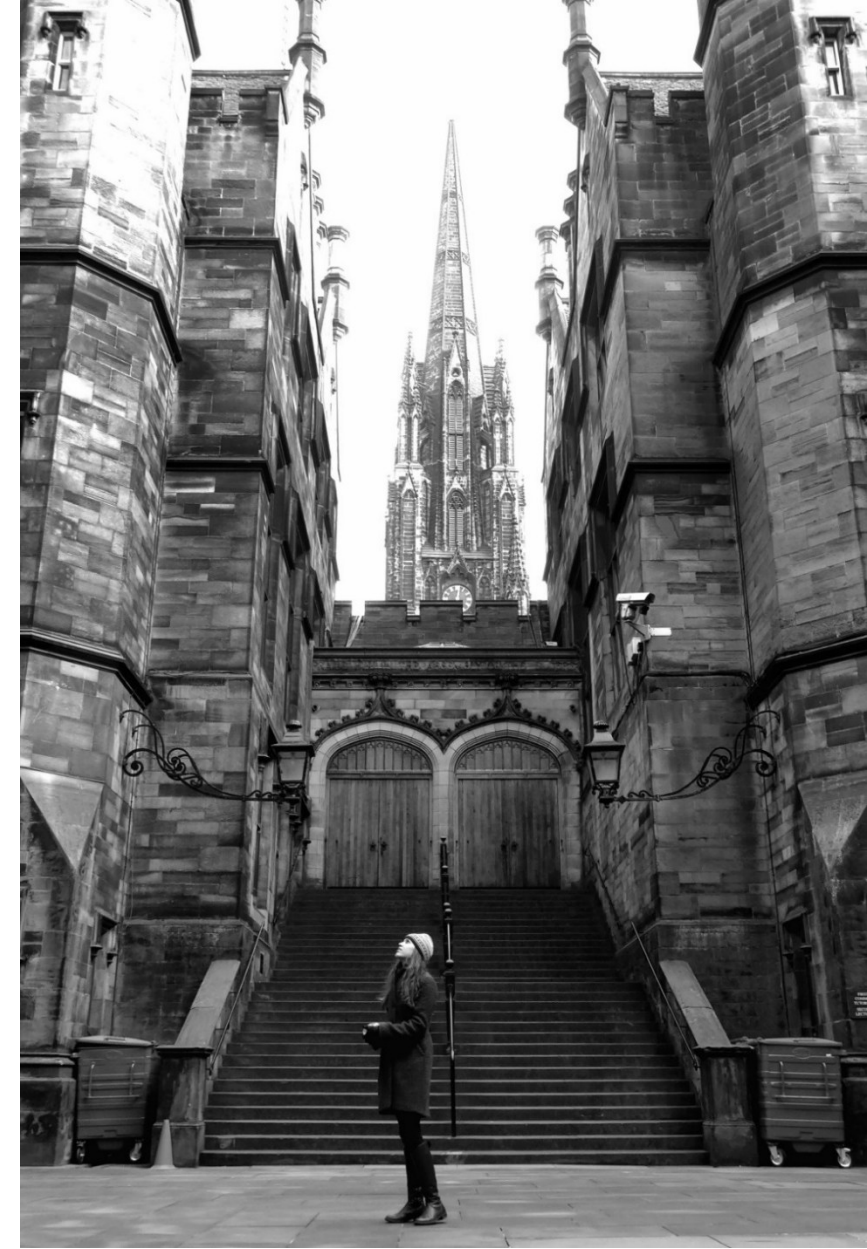
THE UNIVERSITY
of EDINBURGH

EDINBURGH
extraordinary futures await

General questions?

Use the chat window to type your questions to the speaker and other supporting colleagues.

If your question is not answered, or you would prefer not to ask it here in this forum, please email it to our Admissions & Student Recruitment Office:
futurestudents@ed.ac.uk

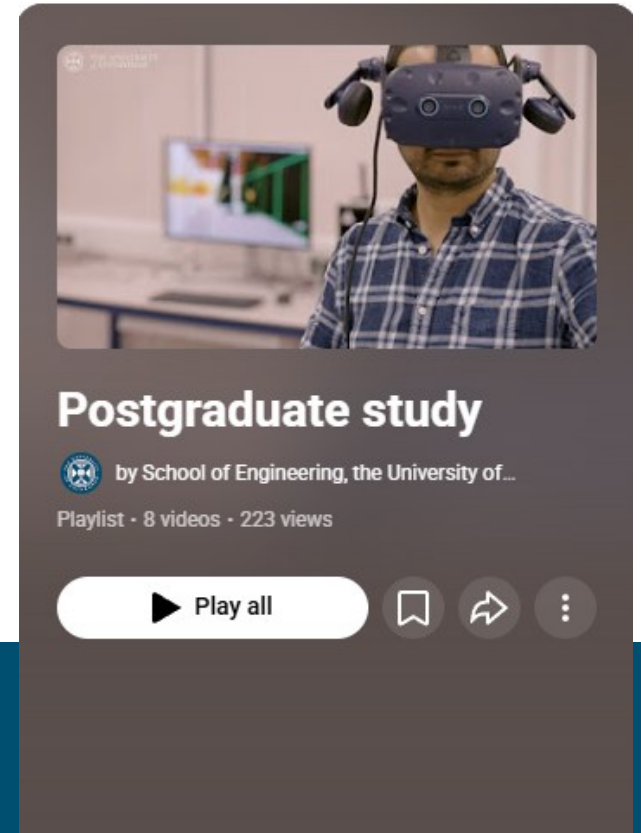


THE UNIVERSITY
of EDINBURGH

EDINBURGH
extraordinary futures await

Next steps...

- **Visit the events hub:**
<https://edin.ac/4gZuP3G>
- **Go on a virtual tour:**
<https://virtualvisits.ed.ac.uk/pg>
- **Chat with a current student:**
<https://edin.ac/student-chat-pg>
- **Chat 1-to1 with a Programme Director**
(email to request)
- **Watch video playlist from the School of Engineering:**
<https://www.youtube.com/playlist?list=PLDIE-GBjzmBaxDC4Isa-yQrz01XSwNjRq>

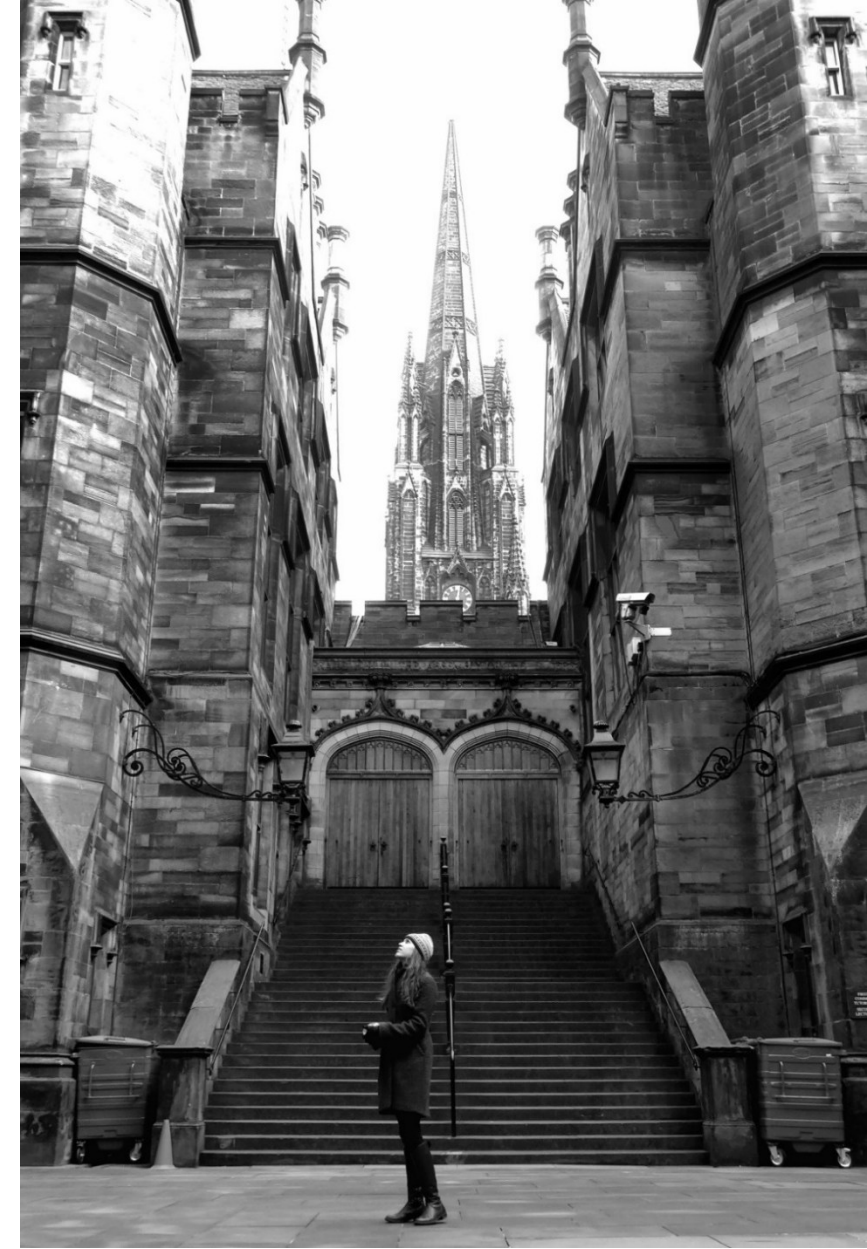


THE UNIVERSITY
of EDINBURGH

Any further questions?

If you have further questions that have not been answered, please email:

- **Admissions & Student Recruitment Office** (General queries)
futurestudents@ed.ac.uk
- **Programme Directors** (Academic queries, programme content)
Contact details can be found within the Degree Finder pages for each Taught Masters programme:
<https://eng.ed.ac.uk/studying/degrees/postgraduate-taught-masters>



THE UNIVERSITY
of EDINBURGH

EDINBURGH
extraordinary futures await



THE UNIVERSITY
of EDINBURGH

Thank you

Dr Philip Hands

Director of Student Recruitment
School of Engineering