



THE UNIVERSITY
of EDINBURGH

PGDE Primary Education

at Moray House School of
Education and Sport

Dr Sue Chapman-Kelly | November 2025

EDINBURGH
extraordinary futures await

PGDE Primary ITE Programme

- One-year qualification designed to develop **critically informed** and **confident teachers** who can meet the needs of our children and young people in the 21st century
- 36 weeks (18 weeks at Moray House, 18 weeks in schools)
- Collaborative model of partnership



Aims of the Programme

PGDE Primary graduates are:

- Committed to **professional learning**
- **Global** in outlook
- Equipped to work across **cultural and linguistic** boundaries
- Enquiring and collaborative professionals with a commitment to **reflective practice**
- Advocates for **social and environmental justice**
- **Pedagogical experts** with subject specialist knowledge
- Transformative practitioners, committed to putting the **learner** at the heart of their work



What does the programme look like?



THE UNIVERSITY
of EDINBURGH

EDINBURGH
extraordinary futures await

Key Themes

- Environmental and Social Justice
- Digital and data literacy
- Health and Wellbeing
- Criticality, enquiry and activism
- Partnership and collaboration



THE UNIVERSITY
of EDINBURGH

EDINBURGH
extraordinary futures await

University –Based Learning

- Lectures
- Workshops
- Independent/group tasks
- Assignments
- Opt-in sessions



THE UNIVERSITY
of EDINBURGH

EDINBURGH
extraordinary futures await

University-Based Learning 2

- Dimensions of Teaching
- Making and Conceptualising Curriculum
- Pedagogies

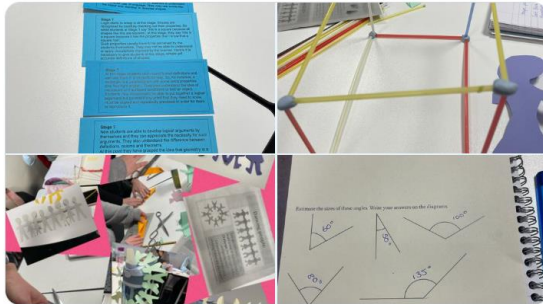


THE UNIVERSITY
of EDINBURGH

EDINBURGH
xtraordinary futures await

#UoEPGDEp

An afternoon looking at shape, measure and position in maths @MorayHouse #UoEPGDEp #maths #teamwork



4:41 PM · Jan 26, 2023 · 714 Views

Today was all about using critical reading to decipher texts, identify their hidden agendas and build a curriculum that offers windows and mirrors for all. Beyond excited to start building my classroom library! 🌟 #UoEPGDEp #PGDE



4:53 PM · Sep 8, 2022

A really interesting day yesterday @MorayHouse spent critically analysing museum texts and considering their 'authored-ness'. Thought at length about how far we've come in the last couple of decades, but also how far we still have to go... #UoEPGDEp #missingvoices



1:27 PM · Jan 20, 2023 · 435 Views

First day back @MorayHouse and straight into using enquiry skills in science! #UoEPGDEp #enquiry #inclusive @MissBHodgson



6:51 PM · Jan 9, 2023 · 172 Views



THE UNIVERSITY
of EDINBURGH

EDINBURGH
extraordinary futures await

Assessment of University-Based Courses

- Assessments vary in nature, format and length
- SCQF Level 11 (Masters level)
- Students **can** leave with 60 credits at this level.



School-Based Learning

- Teaching in School 1 – Early Years – 6 weeks starting late October
- Teaching in School 2 – Middle Years – 6 weeks - February/March
- Teaching in School 3 – Upper Years – 6 weeks - April/May



Placement and Partnership

Placements are allocated across our 6 partner authorities*:

- City of Edinburgh
- Midlothian
- West Lothian
- East Lothian
- Borders
- Fife



THE UNIVERSITY
of EDINBURGH

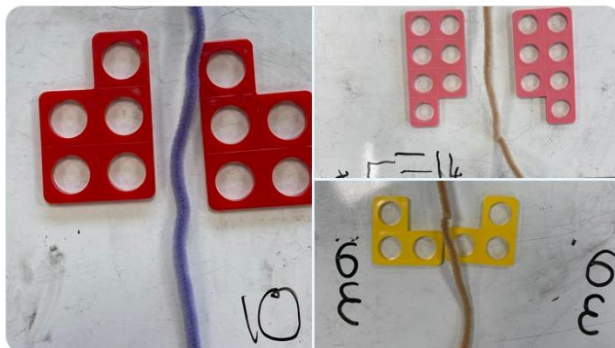
EDINBURGH
extraordinary futures await

First of my art sequences today. Using tint and shade in our Egyptian themed art work. The P3 learners enjoyed learning how to use colour with white and black. Some of the final pieces are great. #UoEPGDEp
PS. I have only found one patch of yellow paint on dress so far !



5:30 PM · Feb 6, 2023 · 74 Views

More doubling practise in todays numeracy lesson! Look at these fantastic butterfly's P1 created using numicon & pipe cleaners to show doubles 🦋
#UoEPGDEp



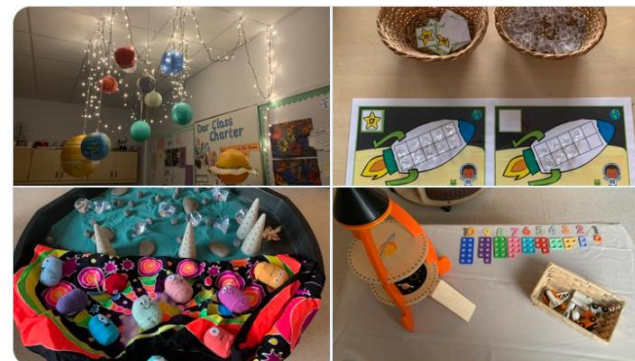
4:54 PM · Nov 23, 2022

Started my middle years placement this week in P3! Looking forward to the next 5 weeks ✅😊
#UoEPGDEp



6:25 PM · Feb 1, 2023 · 2,775 Views

Our theme in Primary 1 at the moment is space 🌌🌙
🚀🪐 #UoEPGDEp



5:41 PM · Nov 14, 2022 from Berwick-upon-Tweed, England



THE UNIVERSITY
of EDINBURGH

EDINBURGH
extraordinary futures await

Assessment of Placement

- Placement is assessed **jointly** by a University Tutor and a School Mentor
- Assessment uses the **GTCS Standards for Provisional Registration** (new standards for 2021).



Why choose Moray House?



THE UNIVERSITY
of EDINBURGH

EDINBURGH
extraordinary futures await

Wellbeing

- Crucial on this programme
- Student Support System
- Assignments NOT due during placement, marks not released during placement
- Model of student support – support that is individualised

Staff always reiterate that they available for all students if they need them and there has been several occasions when I have approached staff and my query however big or small has been dealt with.

I think the level of support from the university personnel has been really positive and I felt very supported and listened to since the very start of the programme.

The team always look for feedback from the students, whether positive or negative and that feedback is visibly taken onboard and changes implemented where appropriate.

Variety of support services provided from tutors and Moray House staff have been very good.



THE UNIVERSITY
of EDINBURGH

EDINBURGH
xtraordinary futures await

Why Edinburgh? Why Moray House?

- The University of Edinburgh is an **internationally and nationally renowned** institution with **world-leading researchers** and **innovative teaching experts**
- Our Programme staff are all teachers, love teaching and have been described as **‘inspirational’, ‘supportive’** and **‘empowering’**.
- Many staff at Moray House are **leaders in their research field** and research drives our teaching.
- The PGDE Primary Programme receives consistently **positive student feedback**.
- The programme takes in a relatively small cohort which encourages **positive relationships** and allows **high contact time**
- High level of support with a focus on **wellbeing**
- Strong **partnerships** with schools



More than this,

You will be part of the Moray House community forever.



THE UNIVERSITY
of EDINBURGH

EDINBURGH
xtraordinary futures await



THE UNIVERSITY
of EDINBURGH

Undergraduate Admissions

College of Arts Humanities
and Social Sciences

James McClintock | November 2025

EDINBURGH
extraordinary futures await

PGDE – How to Apply

- Applications are made through UCAS Undergraduate portal. The UCAS deadline for equal consideration is 14th January 2026
- We will not consider late applications
- Apply to up to 5 institutions simultaneously
- You cannot apply to the University of Edinburgh directly



PGDE - Entry requirements

- A UK undergraduate degree or its international equivalent
- SCQF level 6 English qualification
 - SQA Higher English at grade C
 - GCSE English (Language) and English Literature both at C
- SCQF level 5 Mathematics qualification
 - SQA National 5 Mathematics at grade C/4
 - GCSE Mathematics at grade C/4
- See Degree Finder for more detailed information:
 - <https://education-sport.ed.ac.uk/study/postgraduate-taught-degrees/pgde>



PGDE – Personal Statement

- Why do you want to teach?
- Work experience with primary-aged pupils
- Reflection on working with children and young people
- Understanding of the role of a teacher
- Knowledge of the Scottish Curriculum for Excellence
- Transferrable skills and outside interests



PGDE – Reference

Can be:

- Academic – University-based
- School experience
- Relevant Employment
- Relevant voluntary organisations



PGDE – Interviews

- The selection process involves a professional interview
- Interviews normally run from February onwards
- Applicants will be expected to reflect on their experiences relating to teaching
- Due to competition, we may be unable to shortlist all qualified applicants



PGDE – Contacts

CAHSS Undergraduate Admissions

- Phone: 0131 650 3565
- Email: futurestudents@ed.ac.uk



THE UNIVERSITY
of EDINBURGH

EDINBURGH
extraordinary futures await



THE UNIVERSITY
of EDINBURGH

Hear From Our Alumni

November 2025

EDINBURGH
extraordinary futures await

Contact details for follow-up questions

- We apologise if we did not get through all of your questions in the time allotted for this session. If you have further questions that have not been answered, please email: futurestudents@ed.ac.uk





THE UNIVERSITY
of EDINBURGH

Thank you